

Common Problems

- You must allow un-encrypted communications.
- If your browser uses a proxy service, it must be disabled.

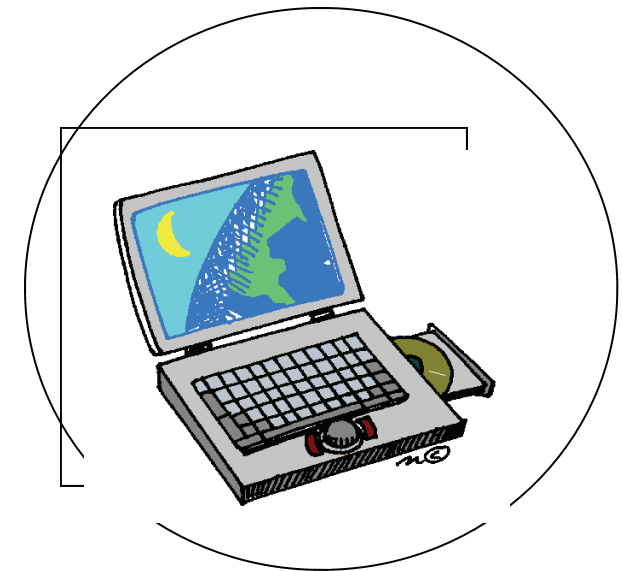


- Some browsers require that cookies and pop ups are enabled, from wificontrol.net



www.bapl.org

July 2007



WiFi Hot Spot

**Free Wireless
Internet Access**

Bethlehem Area
Public Library

Main Library
11 W. Church St.
Bethlehem, PA 18018
610 867-3761 x224

South Side Branch
4th & Webster Sts.
Bethlehem, PA 18015
610 867-7852

Surf the Internet, check email & send webmail

Our coverage area: First floor of the **Main Library** and limited access outside the building. The **South Side Branch** has access on the first floor.

- The library does not supply computers for wireless access. You must supply your own.
- An electrical outlet is available for computers lacking battery power.
- Our Internet connection is filtered for pornography and other offensive content.
- The wireless connection is not encrypted unless you are accessing a secure web site.
- You can receive almost any kind of email, but sending email is limited to use of webmail.

Compatibility / Requirements

- Your computer must have a properly configured wireless adapter compatible with 802.11b (11 Mb) or 802.11g (54 Mb)
- Receiving email is not restricted, but sending is limited to webmail. Use of SMTP is restricted due to anti-spam requirements.

To set-up your computer:

1. Configure your wireless profile for:
SSID = library (*at Main Library*) or
SSID= library-South Side Branch (*at Branch*)
“infrastructure” or “access point” mode
DHCP
No encryption
2. Start your browser– you will be redirected to a login screen.
3. Review our terms of use policy via the link at the bottom of the page.
4. Log in if you already have a username/ password– if not, select the link to “register here.”
5. After registering and logging in, you will be redirected to the library’s home page, from there you can browse the Internet or check your email.
6. Registration is free and simple. Your username/password can be used on future visits to the library.

Anyone can register
& use this FREE service

WiFi Hot Spot @ your library!



Stop by with your laptop & try it out!