

# Finding H.D.

is a 12-month long public exploration of the life and work of poet Hilda Doolittle (H.D.), culminating in the premiere of a new play by Mock Turtle Marionette Theater in October of 2019 at Touchstone Theatre. A partnership between the Lehigh University English Department, the Bethlehem Area Public Library (BAPL), Mock Turtle Marionette Theater, and Bradbury-Sullivan LGBT Community Center.



Department of English



BRADBURY-SULLIVAN  
LGBT COMMUNITY CENTER  
Serving the LGBT Community  
of the Greater Lehigh Valley



BETHLEHEM AREA  
PUBLIC LIBRARY

Learning Starts Here



# Finding H.D.

*A community exploration of the  
life and work of Hilda Doolittle*

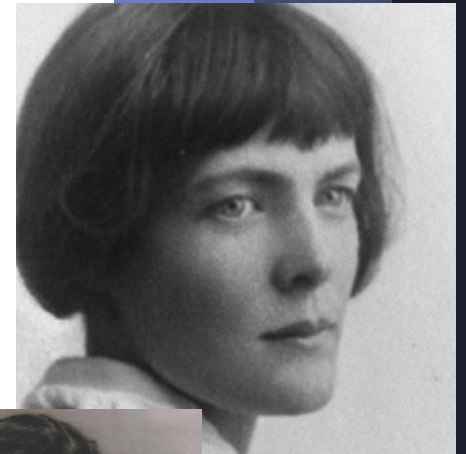
Bethlehem native HILDA DOOLITTLE (1886-1961), known as H.D., drew on experiences of her hometown throughout her long writing life. H.D.'s innovative and experimental poetry and prose established her as a leading Modernist in the early twentieth century, and she is widely recognized today as a queer, feminist visionary. She remains the most influential literary figure born in the Lehigh Valley.

*For more information,  
contact:*

**Jennie Gilrain**  
jega@lehigh.edu

Follow @paBAPL on  
Twitter, Instagram,  
and Facebook for  
updates all year

# Finding H.D.



*A community  
exploration  
of the life  
and work  
of Hilda  
Doolittle*

# A Year of H.D.

## Public Reading of H.D.'s Work

**November 14, 2018. 7-9 pm**

Bethlehem City Hall Rotunda  
10 East Church Street, Bethlehem

Readers to include City of Bethlehem officials, faculty from Lehigh University and Moravian College, community leaders, and area poets.

## Library Talks

Bethlehem Area Public Library  
11 West Church Street, Bethlehem

"How We Fell in Love with H.D. (And Why You Should Too)"

**January 30, 2019. 6:30-8:00 pm**

An introduction to Hilda Doolittle and her masterpiece, *Trilogy*. Given by Seth Moglen and Jenny Hyest, H.D. scholars.

"H.D.'s Moravian Roots in Bethlehem"

**February 26, 2019. 6:30-8:00 pm**

Given by Craig Atwood, Professor of Moravian Theology, Moravian College.

"Challenging Limited Understandings of Gender and Sexuality"

**March 6, 2019. 6:30-8:00 pm**

Given by Mary Foltz, Professor of English, Lehigh University.

(Library Talks cont.)

Panel Discussion: "H.D. and the Natural World"

**April 16, 2019. 6:30-8:00 pm**

Led by Christine Roysdon with panelists Louise Schaefer, Horticulturist, Edge of the Woods Native Plant Nursery; Gary DeLeo, Professor of Physics, Lehigh University; and Marilyn Hazleton, Poet.

Lecture: "H.D. and Emily Dickinson: Bisexual Women Poets Who Made History"

**April 29, 2019. 6-8 pm**

Bradbury-Sullivan LGBT Community Center  
522 West Maple Street, Allentown

Part of the Art History from a Queer Perspective series. Given by Liz Bradbury, Director of the Training Institute of the Bradbury-Sullivan LGBT Community Center.

Film: *Borderline* (1930)

**June 2019 pending confirmation**

SouthSide Film Festival, Bethlehem  
Directed by Kenneth Macpherson, produced by the Pool Group, featuring Paul Robeson, Bryer, and H.D. Discussion following viewing.

H.D.'s Bethlehem: A Walking Tour

**September 2019, dates TBA**

Bethlehem

Led by Seth Moglen, Professor of English, Lehigh University.

Exhibit: Community H.D. Portraits, and Unveiling of Commissioned H.D. Portrait

**September 2019, dates TBA**

Bethlehem Area Public Library  
11 West Church Street, Bethlehem

Forest Bathing with H.D.

**September 2019, dates TBA**

Little Pond Arts Retreat

92 South Penn Dixie Road, Nazareth

A meditative Shinrin Yoku practice with readings of H.D.'s work. Limited to 10 participants. Given by Anisa George.

H.D. Projection Mapping Project

**September-October 2019, dates TBA**

Bethlehem Area Public Library

11 West Church Street, Bethlehem

World Premiere!

A New Mixed-Media Play about H.D.  
by Mock Turtle Marionette Theatre

**October 10, 11, 12, 13, 2019.**

Touchstone Theatre Festival UnBound  
321 East 4th Street, Bethlehem

From artistic director of Mock Turtle Marionette Theatre and chief writer Doug Roysdon, featuring narrative, song, and puppetry. Directed by Jennie Gilrain.

Schedule subject to change. Please follow @paBAPL on Twitter, Instagram, and Facebook for updates all year