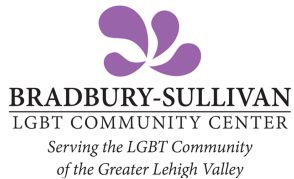


# Finding H.D.

is a 12-month long public exploration of the life and work of poet Hilda Doolittle (H.D.), culminating in the premiere of a new play by Mock Turtle Marionette Theater in October 2019 at Touchstone Theatre. A partnership between the Lehigh University English Department, the Bethlehem Area Public Library (BAPL), Mock Turtle Marionette Theater, and Bradbury-Sullivan LGBT Community Center.



Department of English



# Finding H.D.

*A community exploration of the life and work of Hilda Doolittle*

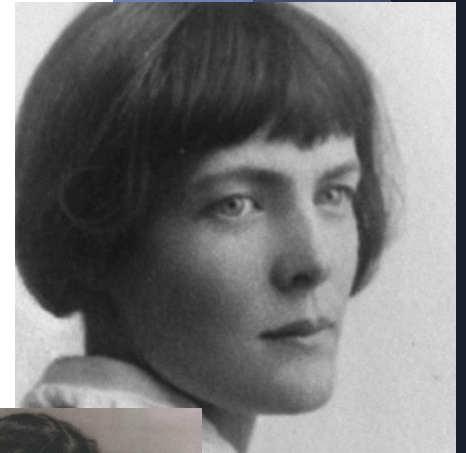
Bethlehem native HILDA DOOLITTLE (1886-1961), known as H.D., drew on experiences of her hometown throughout her long writing life. H.D.'s innovative and experimental poetry and prose established her as a leading Modernist in the early twentieth century, and she is widely recognized today as a queer, feminist visionary. She remains the most influential literary figure born in the Lehigh Valley.

For more information,  
contact:

**Jennie Gilrain**  
[jega@lehigh.edu](mailto:jega@lehigh.edu)

Follow @paBAPL on  
Twitter, Instagram,  
and Facebook for  
updates all year

# Finding H.D.



*A community  
exploration  
of the life  
and work  
of Hilda  
Doolittle*

# A Year of H.D.

## Public Reading of H.D.'s Work

**November 14, 2018. 7-9 pm**

Bethlehem City Hall Rotunda  
10 East Church Street, Bethlehem

Readers to include City of Bethlehem officials, faculty from Lehigh University and Moravian College, community leaders, and area poets.

## Library Talks

Bethlehem Area Public Library  
11 West Church Street, Bethlehem

"How We Fell in Love with H.D. (And Why You Should Too)"

**January 30, 2019. 6:30-8:00 pm**

An introduction to Hilda Doolittle and her masterpiece, *Trilogy*. Given by Seth Moglen and Jenny Hyest, H.D. scholars.

"H.D.'s Moravian Roots in Bethlehem"

**February 26, 2019. 6:30-8:00 pm**

Given by Craig Atwood, Professor of Moravian Theology, Moravian College.

"Challenging Limited Understandings of Gender and Sexuality"

**March 6, 2019. 6:30-8:00 pm**

Given by Mary Foltz, Professor of English, Lehigh University.

(Library Talks cont.)

Panel Discussion: "H.D. and the Natural World"

**April 16, 2019. 6:30-8:00 pm**

Led by Christine Roysdon with panelists Louise Schaefer, Horticulturist, Edge of the Woods Native Plant Nursery; Gary DeLeo, Professor of Physics, Lehigh University; and Marilyn Hazleton, Poet.

Lecture: "H.D. and Emily Dickinson: Bisexual Women Poets Who Made History"

**April 29, 2019. 6-8 pm**

Bradbury-Sullivan LGBT Community Center  
522 West Maple Street, Allentown

Part of the Art History from a Queer Perspective series. Given by Liz Bradbury, Director of the Training Institute of the Bradbury-Sullivan LGBT Community Center.

Forest Bathing with H.D.

**September 22, 2019. 2-5 pm**

**Rain date: September 21, 2-5 pm**

Little Pond Arts Retreat  
92 South Penn Dixie Road, Nazareth

A meditative Shinrin Yoku practice with readings of H.D.'s work. Limited to 10 participants. Register by emailing [jega@lehigh.edu](mailto:jega@lehigh.edu). First come first served. Given by Anisa George.

H.D.'s Bethlehem: A Walking Tour

**September 28, 2019. 1-3 pm**

**Rain date: September 29, 1-3 pm**

Meet at the Bethlehem Area Public Library  
11 W. Church Street, Bethlehem  
Led by Seth Moglen, Professor of English, Lehigh University.

Schedule subject to change. Please follow @paBAPL on Twitter, Instagram, and Facebook for updates all year

*World Premiere!*

"The Secret"

A New Mixed-Media Play about H.D.  
by Mock Turtle Marionette Theater

**Sat Oct 5, 5 pm with talkback at 6:30 pm**

**Sun Oct 6, 1 pm with panel discussion at 2:30 pm**

**Mon Oct 7. 7:30 pm**

**Tues Oct 8. 7:30 pm**

Touchstone Theatre Festival UnBound  
321 East 4th Street, Bethlehem

From artistic director of Mock Turtle Marionette Theater and chief writer Doug Roysdon, featuring narrative, song, and puppetry. Directed by Jennie Gilrain.

"Nevermore will the wind"

A Musical Setting of H.D.'s poem

**Fri October 25, 2019. 8 pm**

**Sat October 26, 2019. 8 pm**

Zoellner Arts Center  
420 E. Packer Ave, Bethlehem

From composer Steven Sametz, directing with Sun Min Lee, of Lehigh University, with 200 singers and orchestra. Also the Fauré Requiem.

Unveiling of Commissioned  
Portrait of H.D., Painted by  
Angela Fraleigh

**Winter 2019, dates TBA**

Bethlehem Area  
Public Library  
11 West Church Street  
Bethlehem